

GREATER BOYNTON PLACE

-A Part Of Sun Valley, A Planned Unit Development, Lying In Section 26, Township 45 South, Range 42 East-
 Being A Replat Of Portions Of Tracts 45 Through 48, Inclusive, Subdivision Of Section 26, Plat Book 6, Page 26, Public Records Of Palm Beach County, Florida
 March, A. D., Nineteen Hundred Eighty Seven

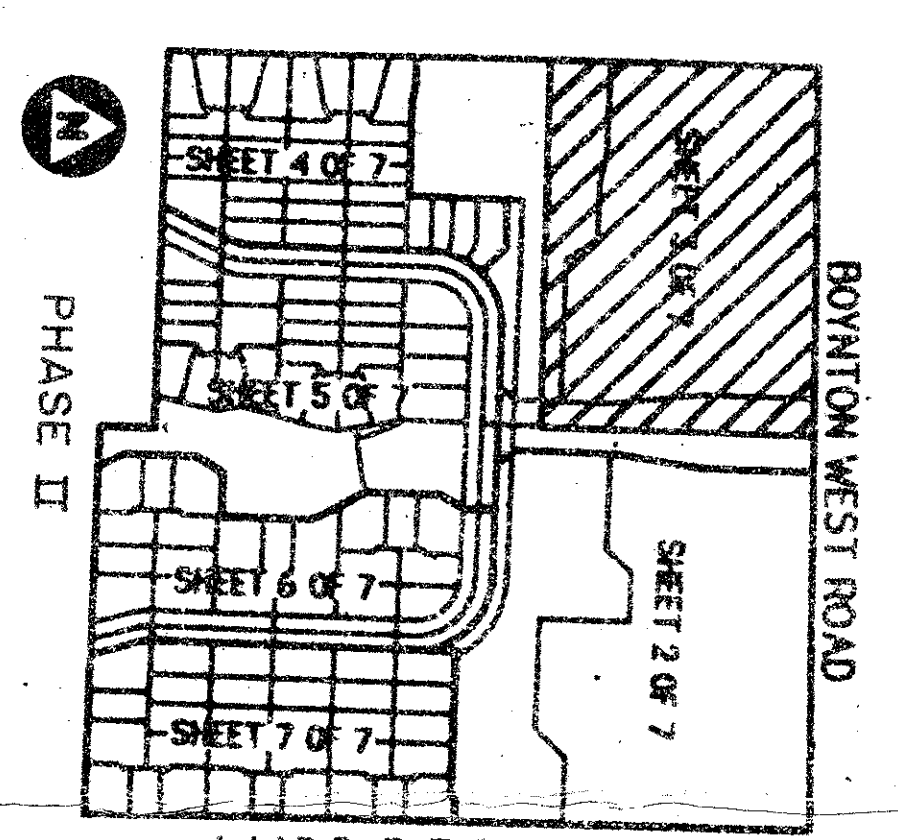
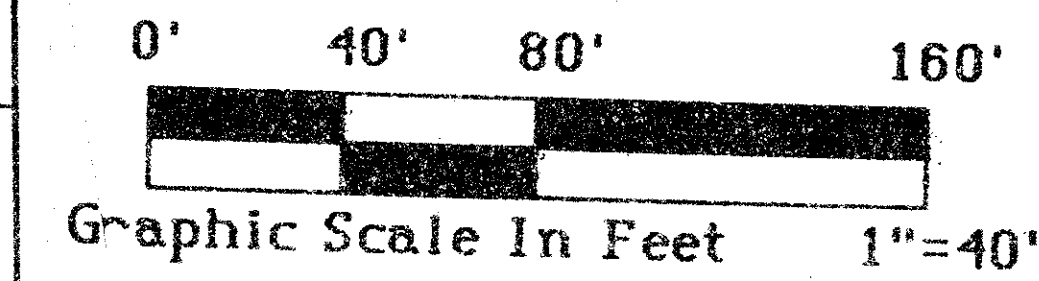
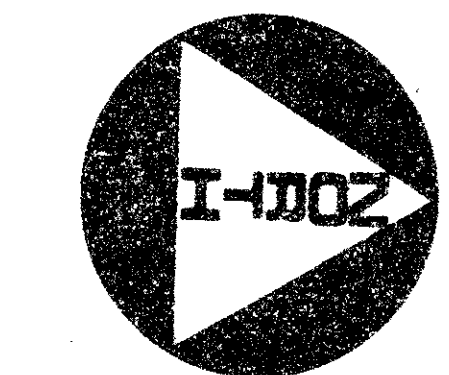
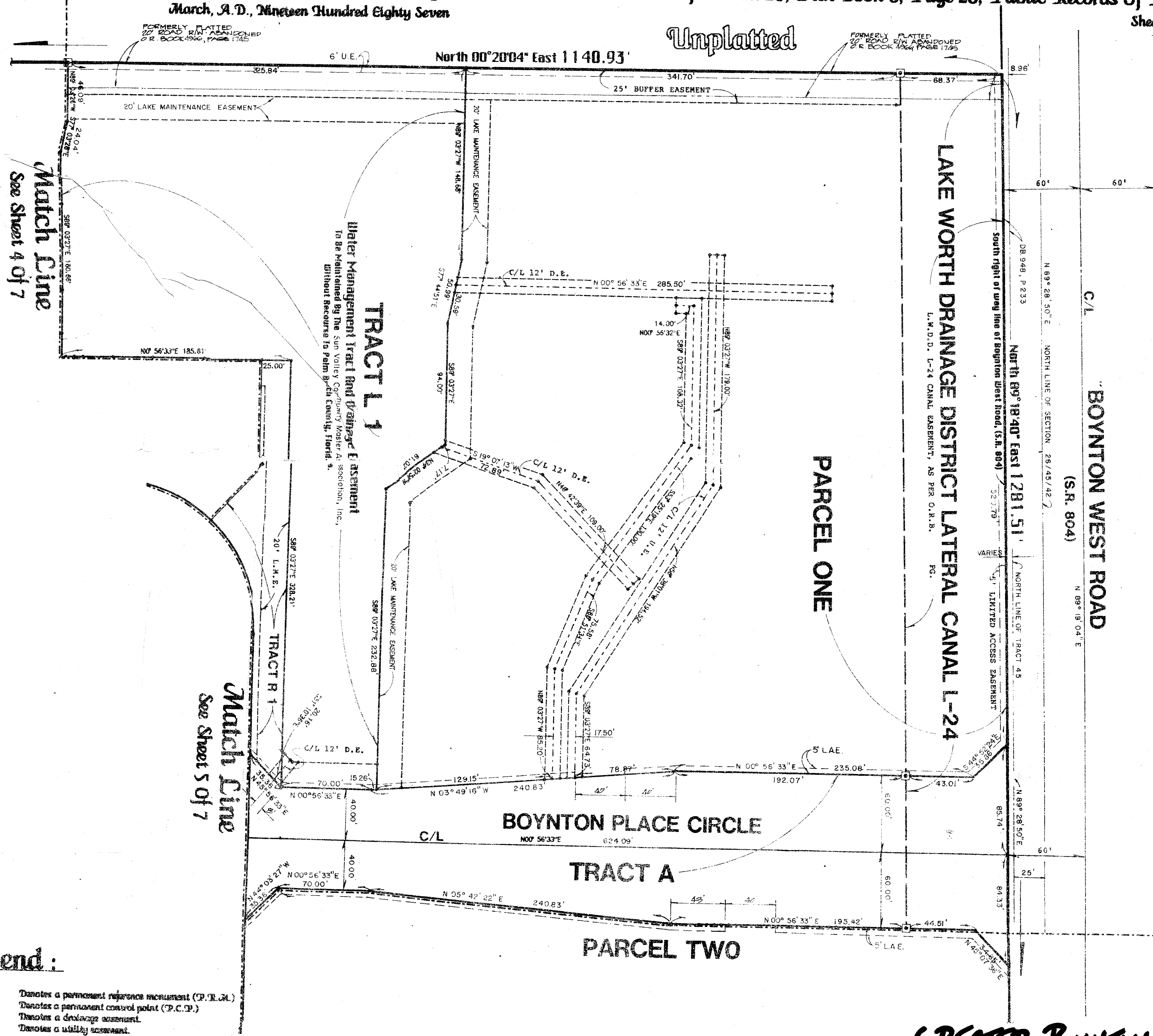
State of Florida)
 County of Palm Beach)

This Plat was filed for record
 at _____ this _____ day of
 _____, A.D., 1987, and
 duly recorded in Plat Book
 _____ as Page _____ thru _____

John B. Dunkle,
 Clerk of the Circuit Court.
 By: _____ Deputy C

Sheet Three Of Seven

Unplatted



KEY MAP
 NOT TO SCALE

SUBDIVISION 267
 BOOK 57
 FLOOD ZONE B
 QUAD # 35
 SEE PUD
 PUD NAME
 ZIP CODE 33437
 PAGE 138
 FLOOD MAP # 408
 ZONING RS
 2674512
 844 2A
 0498-004

- Legend :**
- ⊙ ————— Denotes a permanent reference monument (P.R.M.)
 - ⊙ ————— Denotes a permanent control point (P.C.P.)
 - D.E. ————— Denotes a drainage easement.
 - L.E. ————— Denotes a utility easement.